



दिल्ली सरकार
कार्यालय प्रमुख अभियंता, लो0नि0वि0,
12वां तल, बहु-मंजिला भवन, इंद्रप्रस्थ संपदा, नई दिल्ली: 110002
☎ 23490260, 23724560, 23311293 फ़ैक्स 23319021
Toll Free Complaint No. 1800 11 0093
वेबसाइट: <http://pwd.delhigovt.nic.in>
ई-मेल: pwdhqdelhi@gmail.com/dppwdhqdelhi@gmail.com



सं0: 29(1)/लोनवि/ प्रमुख अभियंता/2019/1632 (H)

दिनांक:03.04.2019

सेवा में


1. प्रधान मुख्य अभियंता (अनुसंधान), लोनवि, दि.स., 12वां तल, एमएसओ भवन, नई दिल्ली।
2. प्रधान मुख्य अभियंता (परियोजना), लोनवि, दि.स., 9वां तल, एमएसओ भवन, नई दिल्ली।
3. मुख्य अभियंता (दक्षिण) अनु, लोनवि, दि.स., 7वां तल, एमएसओ भवन, नई दिल्ली।
4. मुख्य अभियंता (उत्तर) अनु, लोनवि, दि.स., 5वां तल, एमएसओ भवन, नई दिल्ली।
5. मुख्य अभियंता (प्रोजेक्ट), लोनवि, 13वां तल, एमएसओ भवन, नई दिल्ली।
6. मुख्य अभियंता (फ़्लाइओवर), लोनवि, नई दिल्ली।
7. परियोजना प्रबंधक (सीसीटीवी, स्ट्रीट लाइट एवं एलईडी स्क्रीन), लोनवि, 11वां तल, एमएसओ भवन, नई दिल्ली।
8. निदेशक (उद्यान), लोनवि, 11वां तल, एमएसओ भवन, नई दिल्ली।
9. अधीक्षण अभियंता (गुणवत्ता आश्वासन इकाई), लोनवि, 8वां तल, एमएसओ भवन, नई दिल्ली।

विषय:- Reallocation of office spaces at MSO Bldg. under occupation of PWD.

In continuation to this office letters of even No.1076 (H) dated 05.03.2019 & even No.1392 (H) dated 20.03.2019, find enclosed herewith the reallocated office spaces among various PWD units in Annexure 'I' & Annexure 'II'. All Pr. CEs/CEs/PMs/DoH/SE(QAU) are requested to take necessary action so that all affected units as per (Annexure 'I' & Annexure 'II') can strictly comply the same by 15.04.2019.

This issues with the approval of Engineer-in-Chief, PWD.

Encl: (Annexure 'I' & Annexure 'II')


(Virendra Kumar)
Dy. Director (Estt.)

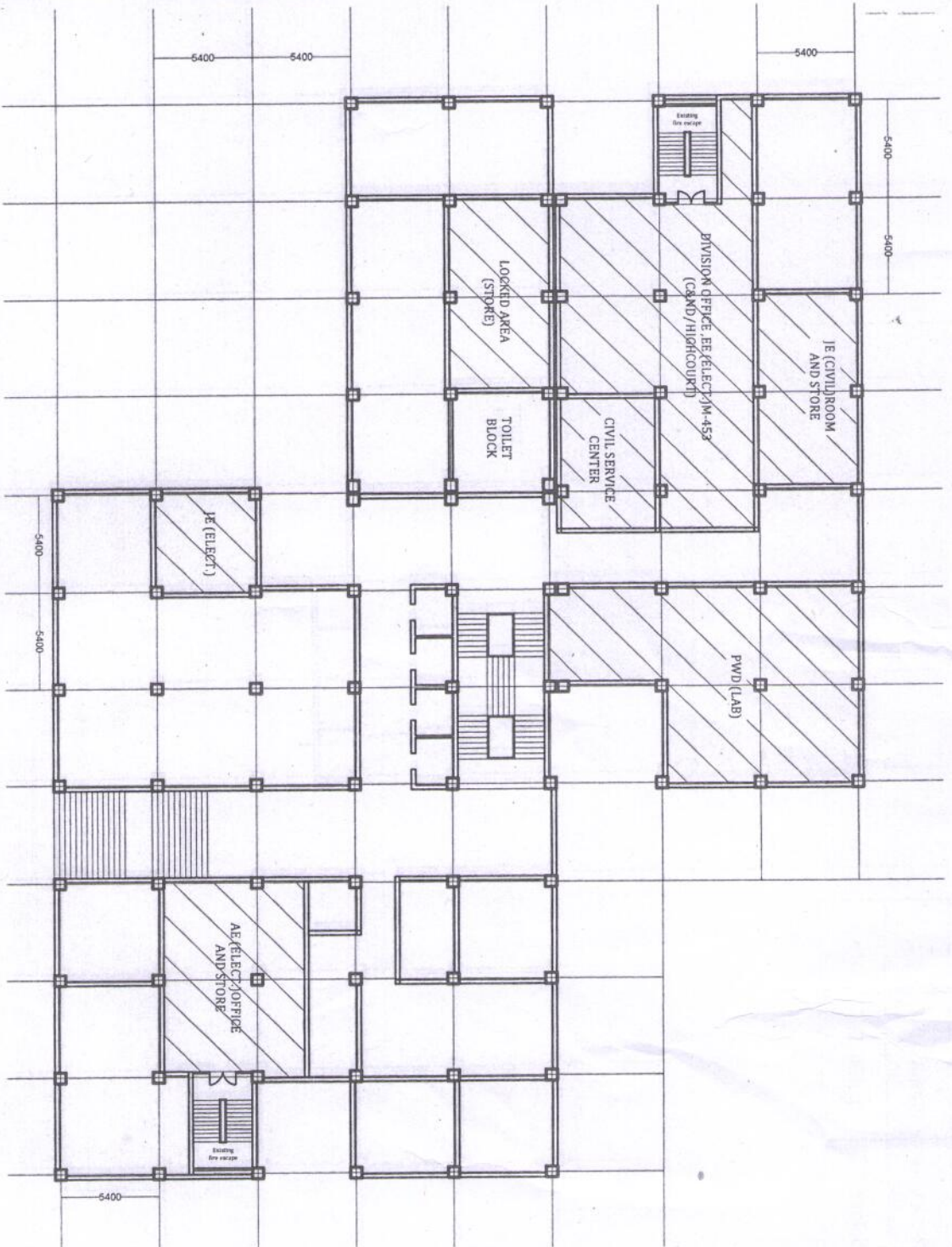
Annexure '1

Reallocation of office spaces at MSO Bldg. among various units of PWD.

Floor	Existing units in the area under occupation of PWD	Proposed units to occupy the office spaces available under PWD	Remarks
Ground	PWD Lab Service Centre (Civil) JE(Civil)&Store room EE(Elect.) C&ND/High Court AE (Elect.) & Store JE(Elect.)	PWD Lab Service Centre (Civil) JE(Civil)&Store room EE(Elect.) C&ND/High Court AE (Elect.) & Store JE(Elect.)	No change
First	CE(Projects) SE(Education)	CE(Projects)	Entire space to be used by O/o CE(Projects). SE(Education) shall vacate the space for CE(Projects) unit.
Second	CPM(Education) CE(Health)M	CE(Health) along with SE(Elect.) Health	All units under CPM(Education) shall vacate the space for use by CE(Health)
Third	CE(East)	CE(East)	No change
Fourth	SA(East) EE(Elect.) (M-251)NE PM Education M	CE(Flyover)	Entire space to be used by CE(Flyover). All units such as SA (East), EE(Elect.) (M-251)NE, PM Education Maintenance shall vacate the space.
Fifth	CE(North)	CE(North)	No change.
Sixth	CPM Health Project SA (North)	SA(East) SA(North)	Entire space to be equally shared by SA(East) & SA(North) CPM (Health) shall vacate the space.
Seventh	CE(South)	CE(South)	No change
Eighth	SE(QAU) EE(Elect) Housing Project SA(Projects) Architect (South)	SA(Project) Architect (South)	SE(QAU), EE(Elect)Housing Project shall vacate the space for use by SA(Project) & Architect (South) unit.
Ninth	Pr.CE(Projects)	Pr. CE(Projects)	No change
Tenth	PAO-XII & XXII	PAO-XII & XXII	No change
Eleventh	EE(Elect) (M-453) Division Office (Hort.) Old Division office M-432 PM(CCTV, Wifi, Street light and LED Screens)	SE(QAU) PM(CCTV, Wifi, Street light and LED Screens). EEs under PM (CCTV, Wifi, Street light and LED Screens).	EE(Elect.) (M-453) shall vacate the space for use by SE (QAU). Old Division Office M-432 will vacate the space for use by EEs under PM (CCTV, Wifi, Street light and LED Screens). Horticulture Division Office shall vacate the space and the same shall be kept as reserve space for future allocation.
Twelfth	E-in-C Office Pr. CE(Maintenance) SA(Projects)	E-in-C office Pr. CE(Maintenance)	SA (Project) shall vacate the space for use by E-in-C office.
Thirteenth	PM(OP) CPM(Housing) EEs under PM (CCTV,....) Training Centre, Auditorium etc.	PM(OP) Training Centre, Auditorium etc. Director (Hort.)	CPM (Housing) shall vacate the space for use by Director (Hort.). EEs under PM (CCTV,....) shall vacate the space and the same will be kept as reserve space for future allocation.

GROUND FLOOR PLAN

CE PROJECT

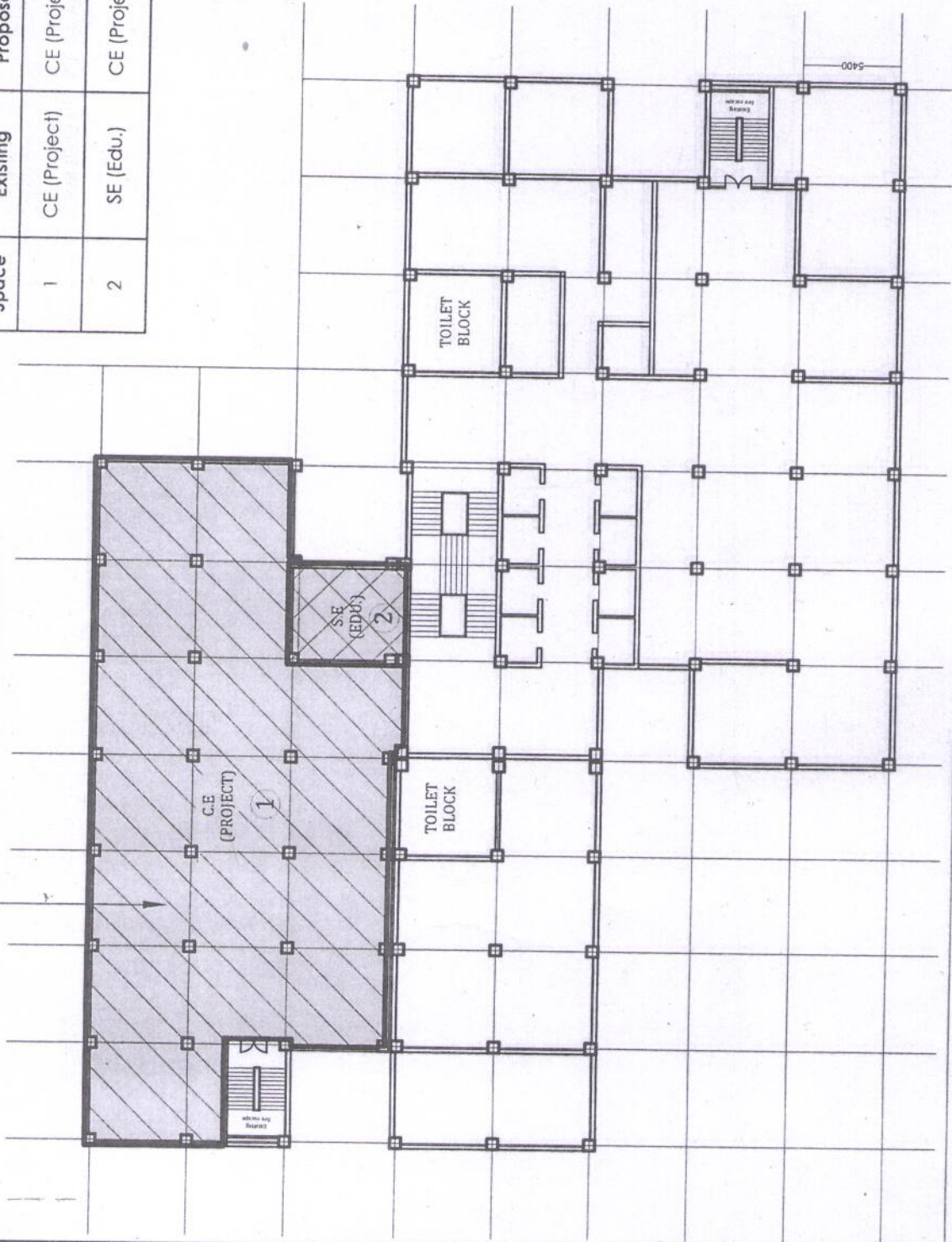


Handwritten mark

02/04/2019.
Director (Bst.)
12th Floor.

CHIEF ENGINEER (PROJECT)

Floorwise relocation of offices			
Space	Existing	Proposed	Remarks
1	CE (Project)	CE (Project)	Remains unchanged.
2	SE (Edu.)	CE (Project)	SE (Edu.) will move out.

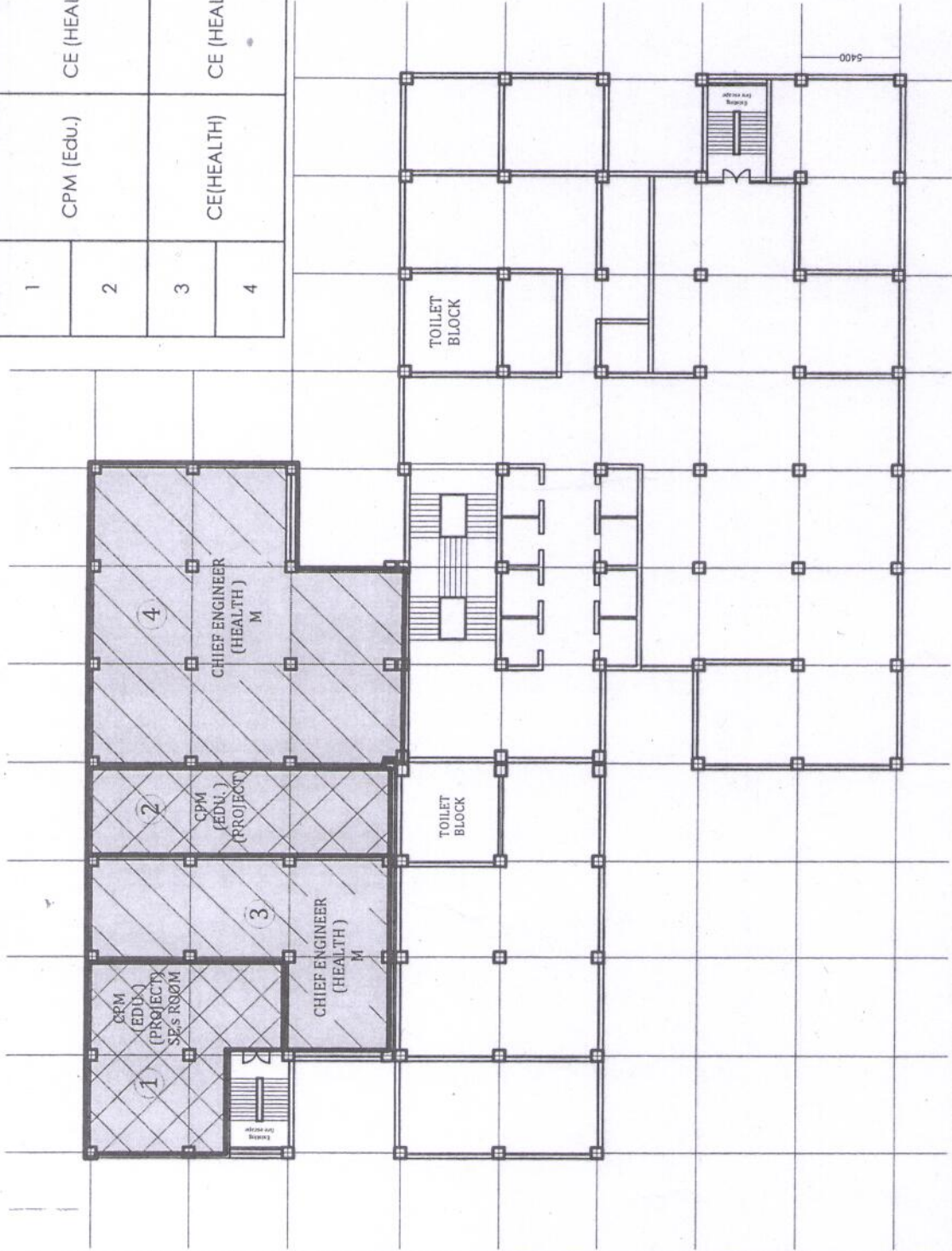


dh

CE (PROJECT)

FIRST FLOOR PLAN

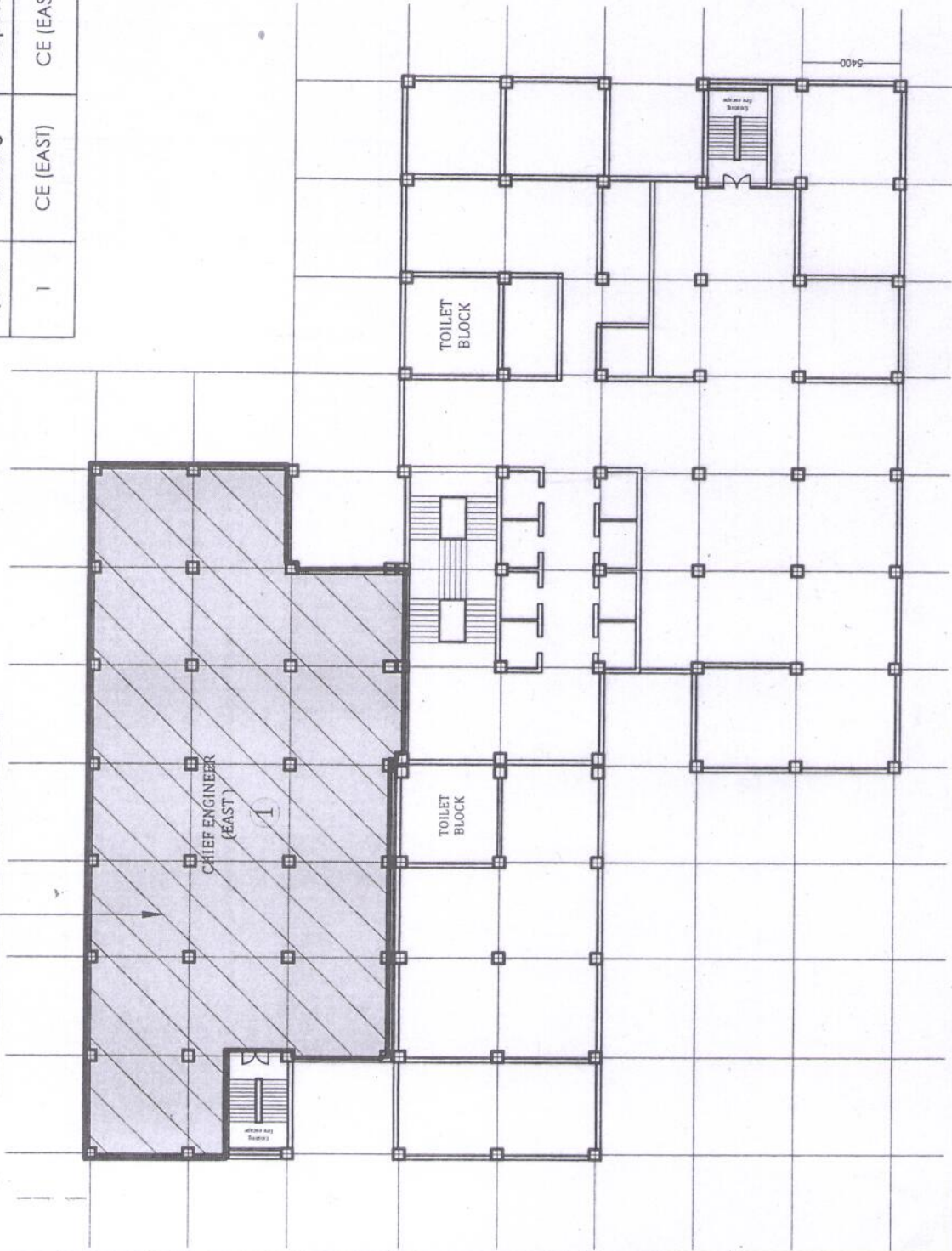
Floorwise relocation of offices			
Space	Existing	Proposed	Remarks
1	CPM (Edu.)	CE (HEALTH)	CPM (Edu.) will move out & vacate the space.
2	CPM (Edu.)	CE (HEALTH)	
3	CE(HEALTH)	CE (HEALTH)	Remains unchanged.
4	CE(HEALTH)	CE (HEALTH)	



CE (HEALTH)
SECOND FLOOR PLAN

dh

CHIEF ENGINEER (EAST)

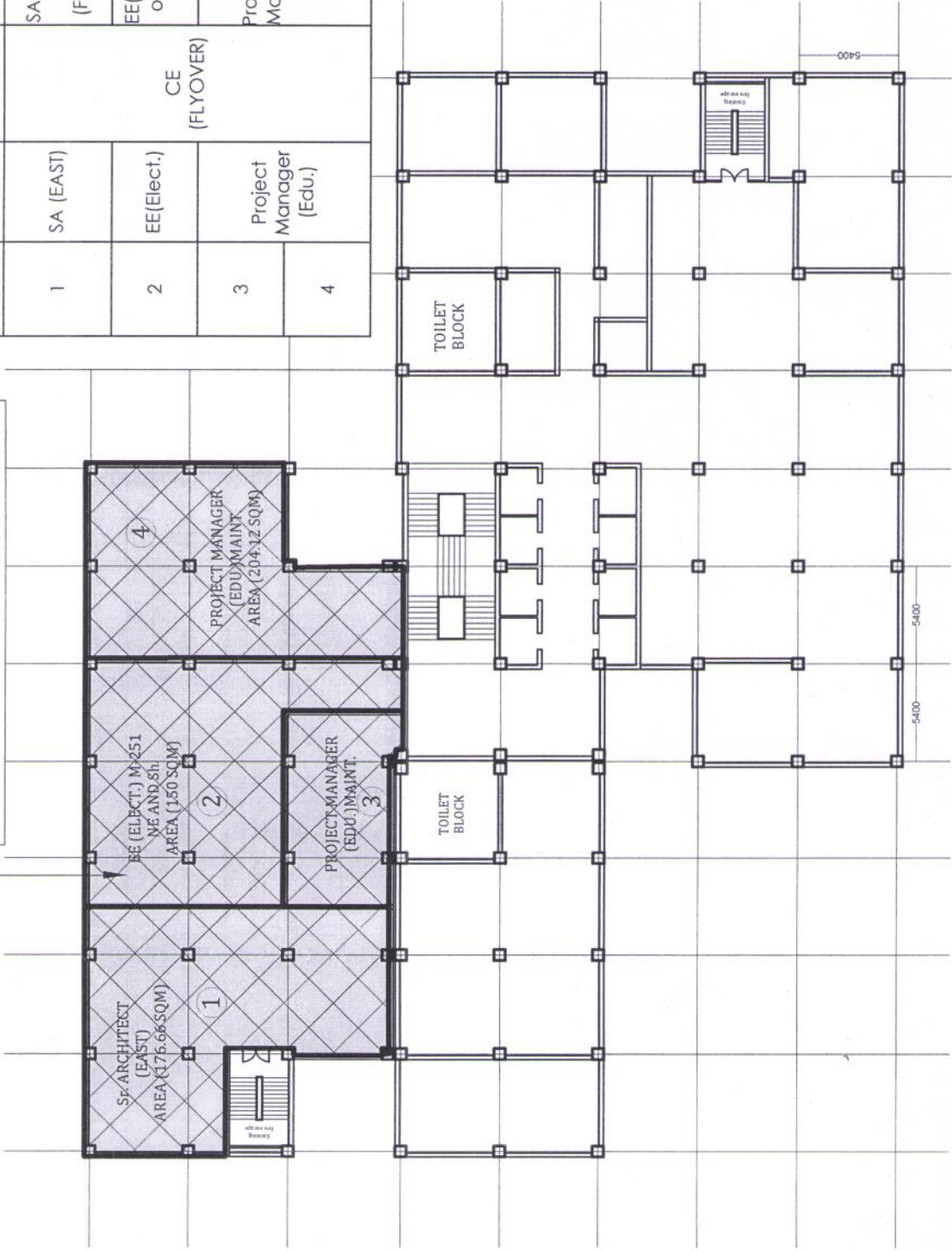


Floorwise relocation of offices			
Space	Existing	Proposed	Remarks
1	CE (EAST)	CE (EAST)	Remains unchanged.

CE (EAST)
THIRD FLOOR PLAN

dr

CHIEF ENGINEER (FLYOVER)



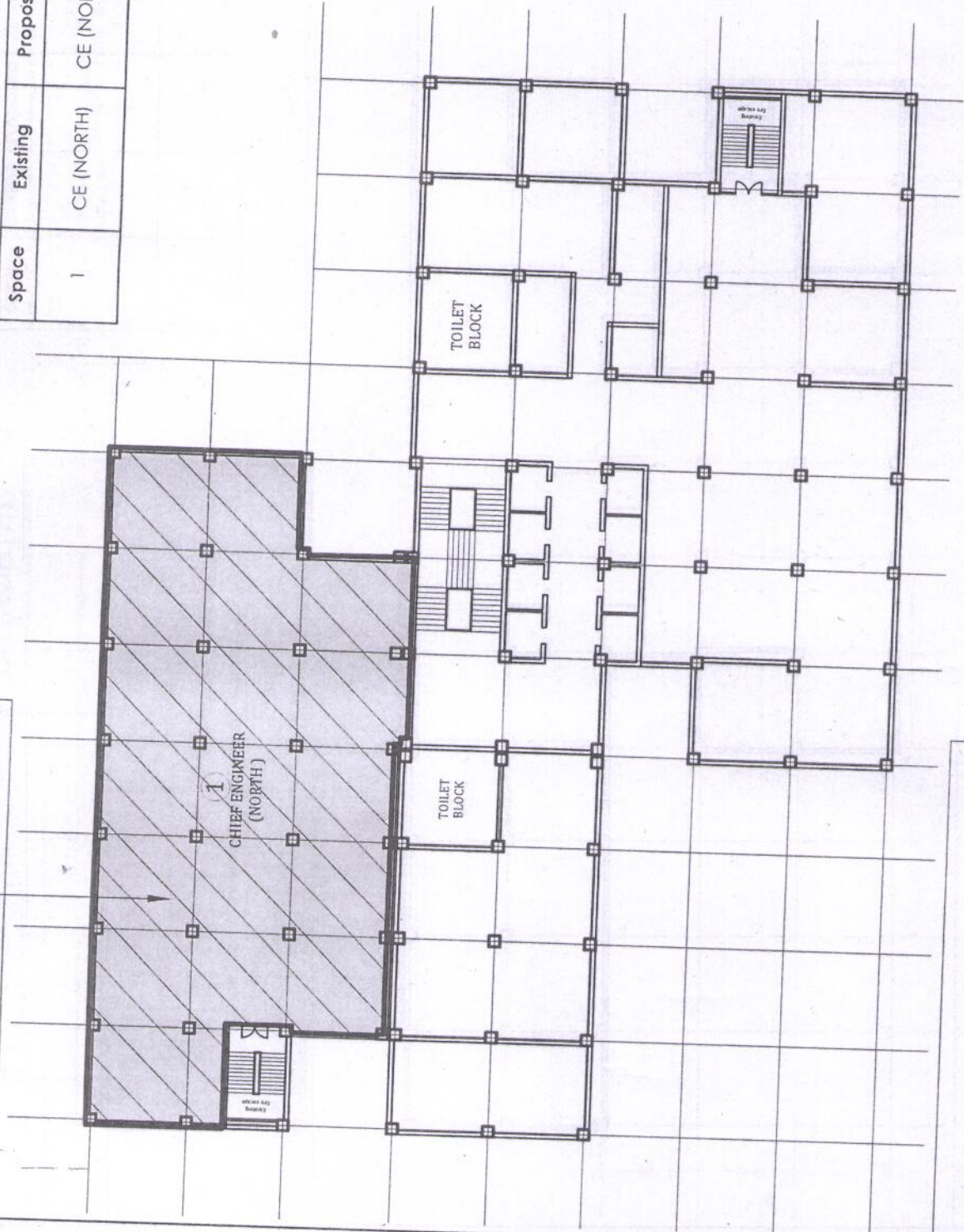
Floorwise relocation of offices			
Space	Existing	Proposed	Remarks
1	SA (EAST)		SA (EAST) will be shifted on 6th floor & CE (FLYOVER) will come.
2	EE(Elect.)	CE (FLYOVER)	EE(Elect.) will be shifted out & CE (FLYOVER) will come.
3	Project Manager (Edu.)		Project Manager (Edu.) Maint. will be shifted & CE (FLYOVER) will come.
4			

CE (FLYOVER)

FOURTH FLOOR PLAN

dh

CHIEF ENGINEER (NORTH)



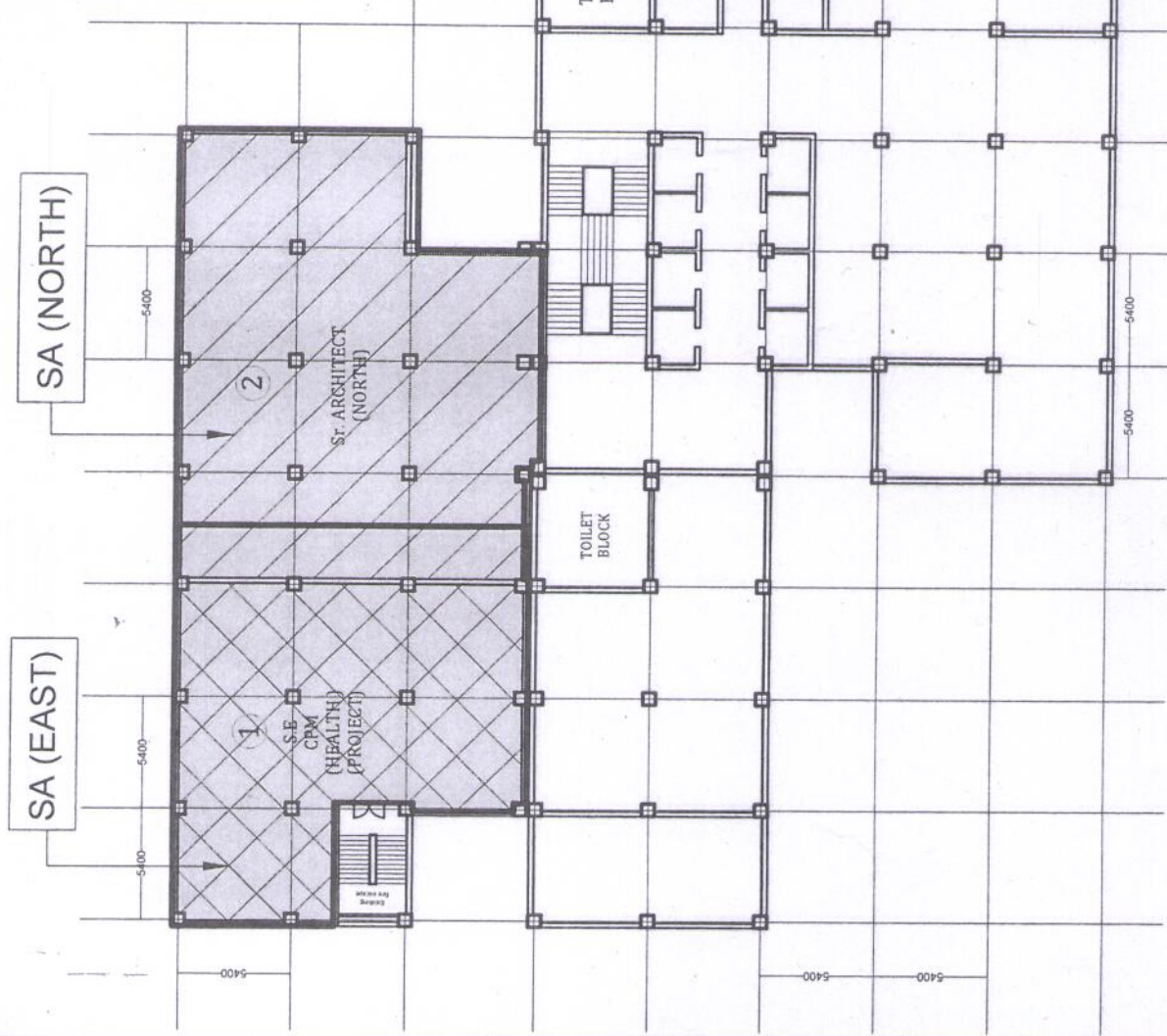
CE (NORTH) SA (EAST)

FIFTH FLOOR PLAN

dr

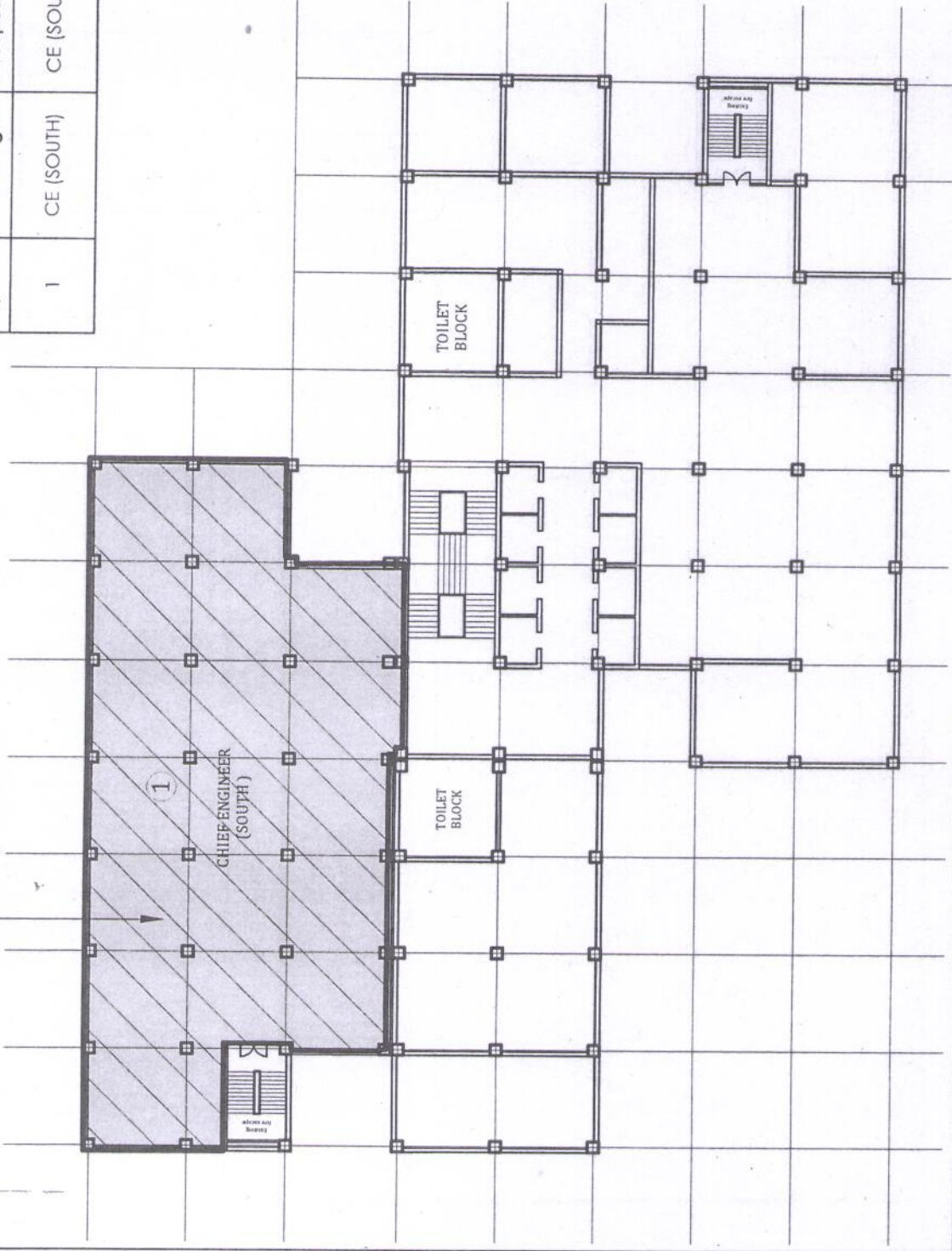
Floorwise relocation of offices			
Space	Existing	Proposed	Remarks
1	CE (NORTH)	CE (NORTH)	Remains unchanged.

Floorwise relocation of offices			
Space	Existing	Proposed	Remarks
1	CPM (HEALTH)	SA (EAST)	CPM (HEALTH) will be shifted out & SA (EAST) will come from 4th floor.
2	SA (NORTH)	SA (NORTH)	Remains unchanged.



SA (NORTH) & SA(EAST)
SIXTH FLOOR PLAN

CHIEF ENGINEER (SOUTH)

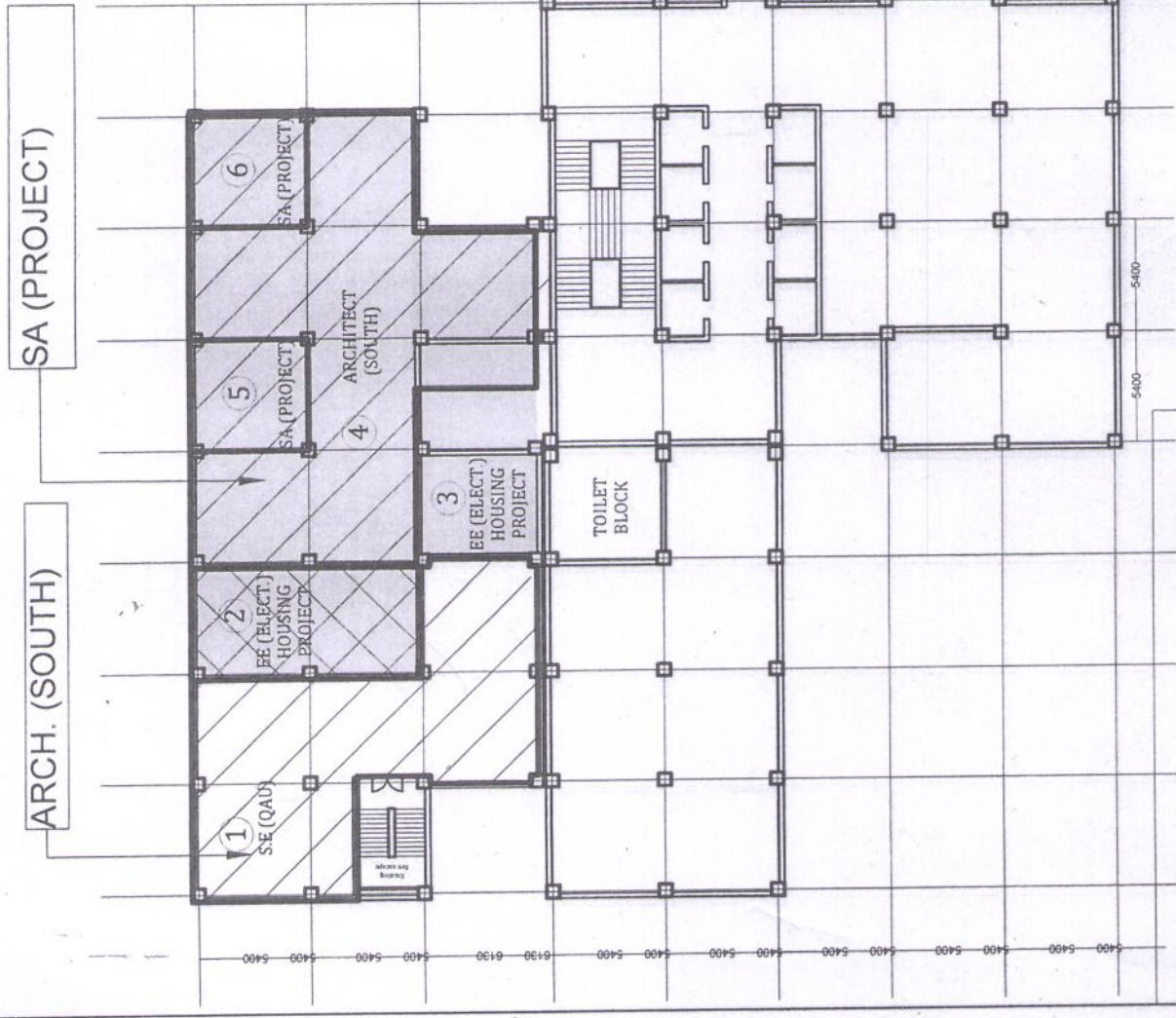


dh

Floorwise relocation of offices			
Space	Existing	Proposed	Remarks
1	CE (SOUTH)	CE (SOUTH)	Remains unchanged.

CE (SOUTH)M
SEVENTH FLOOR PLAN

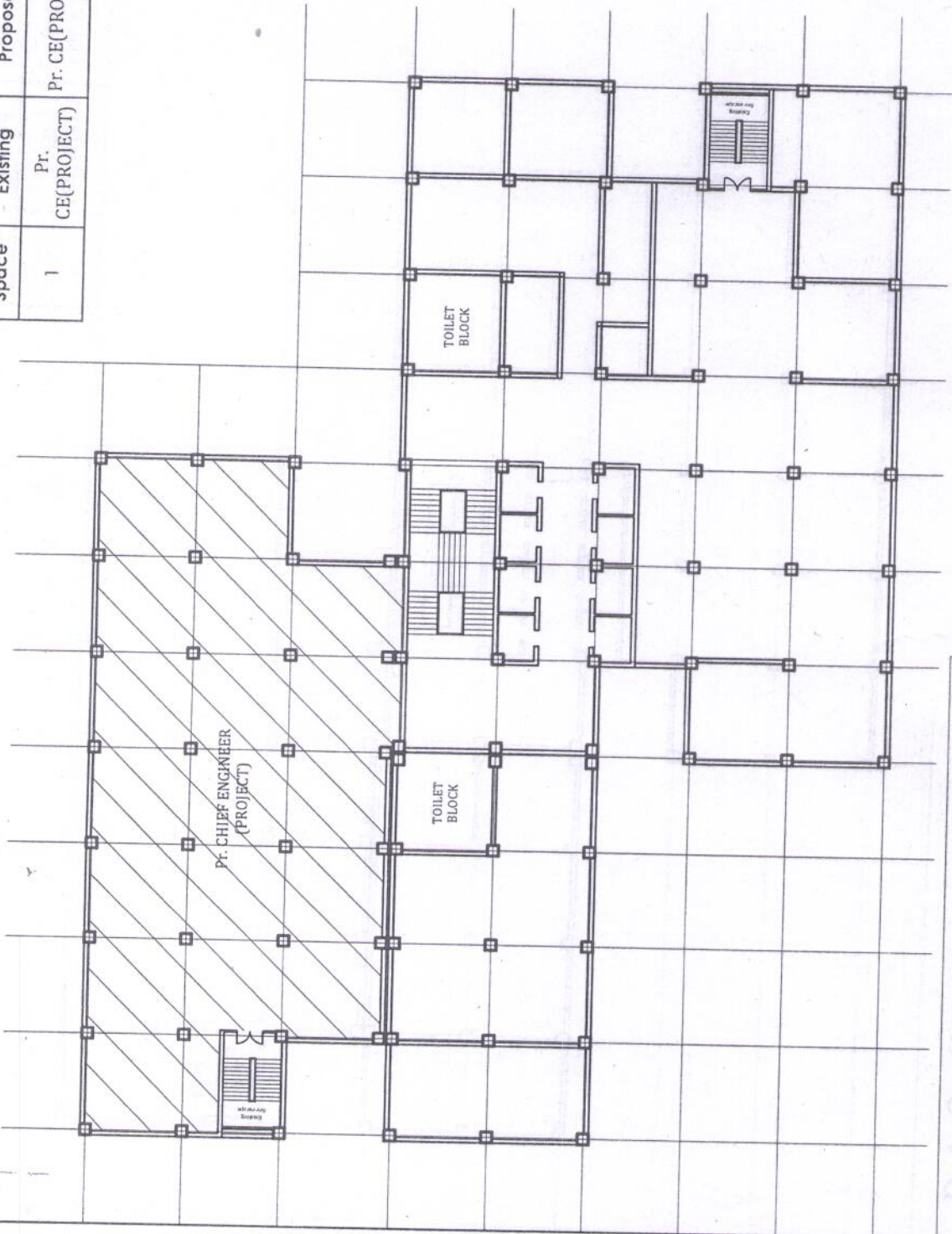
Floorwise relocation of offices			
Space	Existing	Proposed	Remarks
1	SE (QUA.)	ARCHITECT (SOUTH)	SE (QUA.) will be shifted on 11th floor & ARCHITECT (S) will come.
2	EE (Elect.) Housing	SA (PROJECT)	EE (Elect.) Housing will be shifted out & SA (PROJECT) will come from 12th floor
3			
4	ARCHITECT (SOUTH)	SA (PROJECT)	SA (PROJECT) will come from 12th floor.
5	SA (PROJECT)	SA (PROJECT)	Remains unchanged.



SA(PROJECT) & ARCH. (S)

EIGHTH FLOOR PLAN

Floorwise relocation of offices			
Space	Existing	Proposed	Remarks
1	Pr. CE(PROJECT)	Pr. CE(PROJECT)	Remains unchanged.

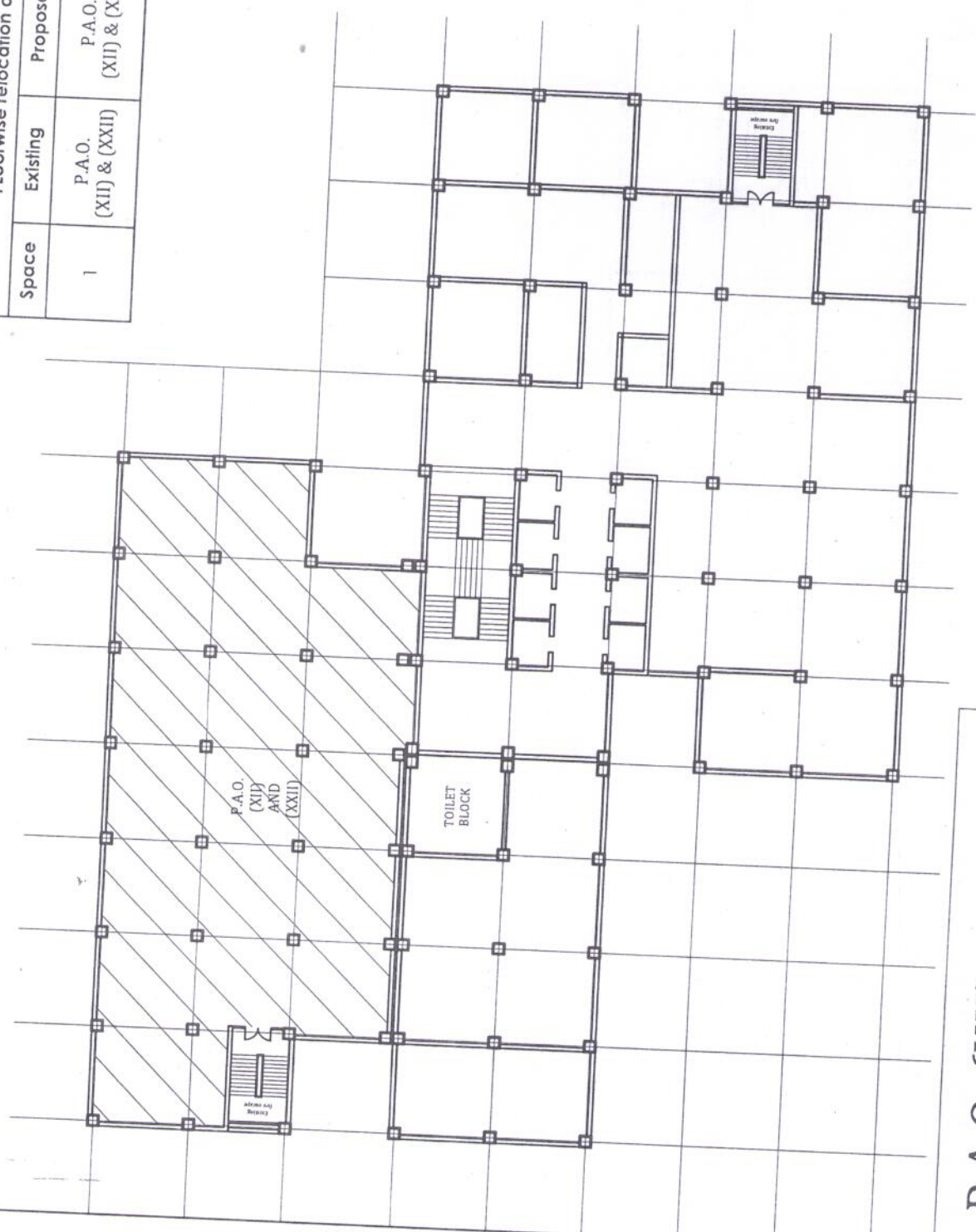


dt

Pr. CHIEF ENG. (PROJECT)

NINETH FLOOR PLAN

Floorwise relocation of offices			
Space	Existing	Proposed	Remarks
1	P.A.O. (XII) & (XXII)	P.A.O. (XII) & (XXII)	Remains unchanged.

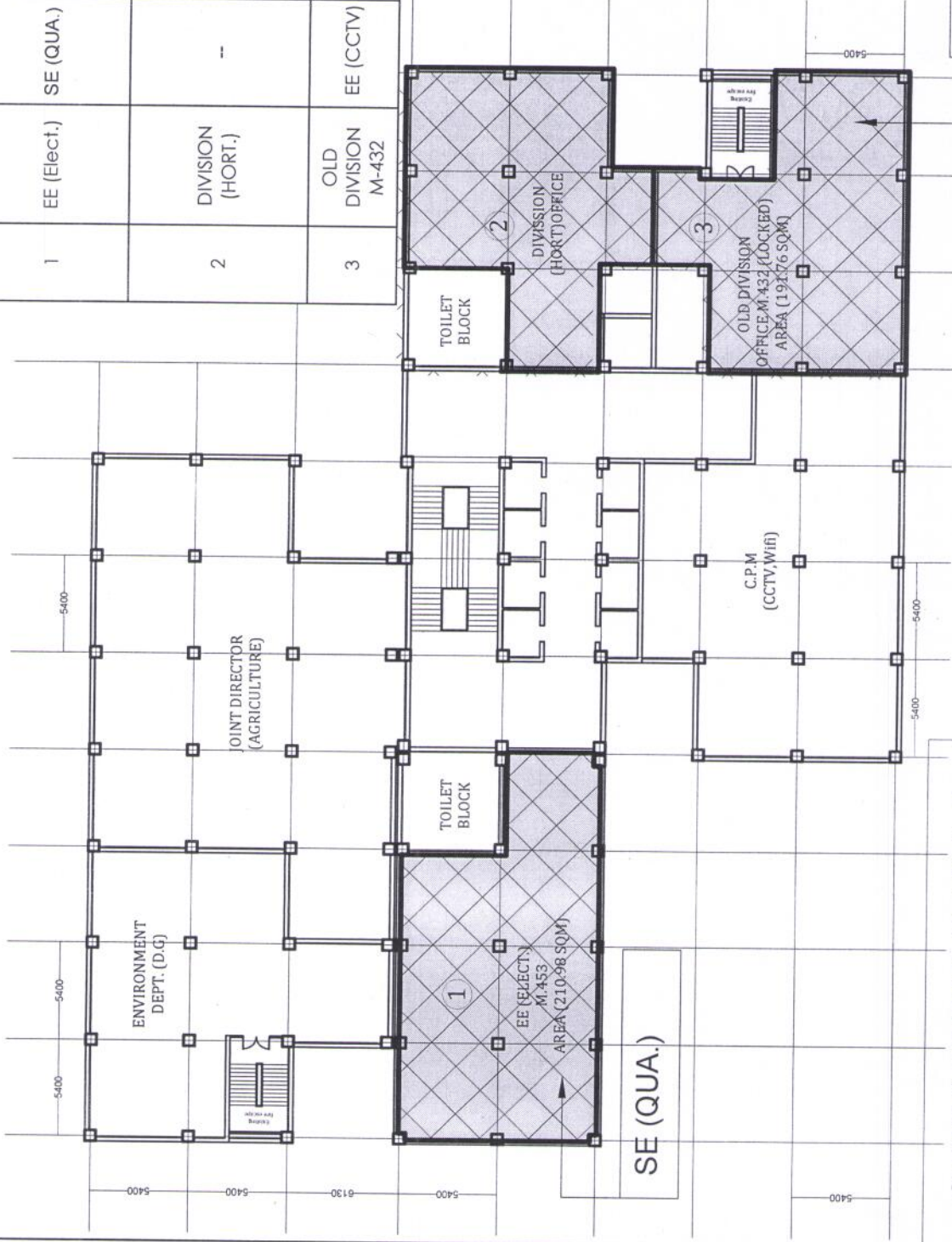


dr

P.A.O. (XII)
TENTH FLOOR PLAN

Floorwise relocation of offices

Space	Existing	Proposed	Remarks
1	EE (Elect.)	SE (QUA.)	EE (Elect.) will be shifted out & SE (QUA.) will come from 8th
2	DIVISION (HORT.)	--	DIVISION (HORT.) will be shifted on 13th Floor. & Vacant space available.
3	OLD DIVISION M-432	EE (CCTV)	OLD DIVISION will be shifted out & EE (CCTV) will come from 13th floor.



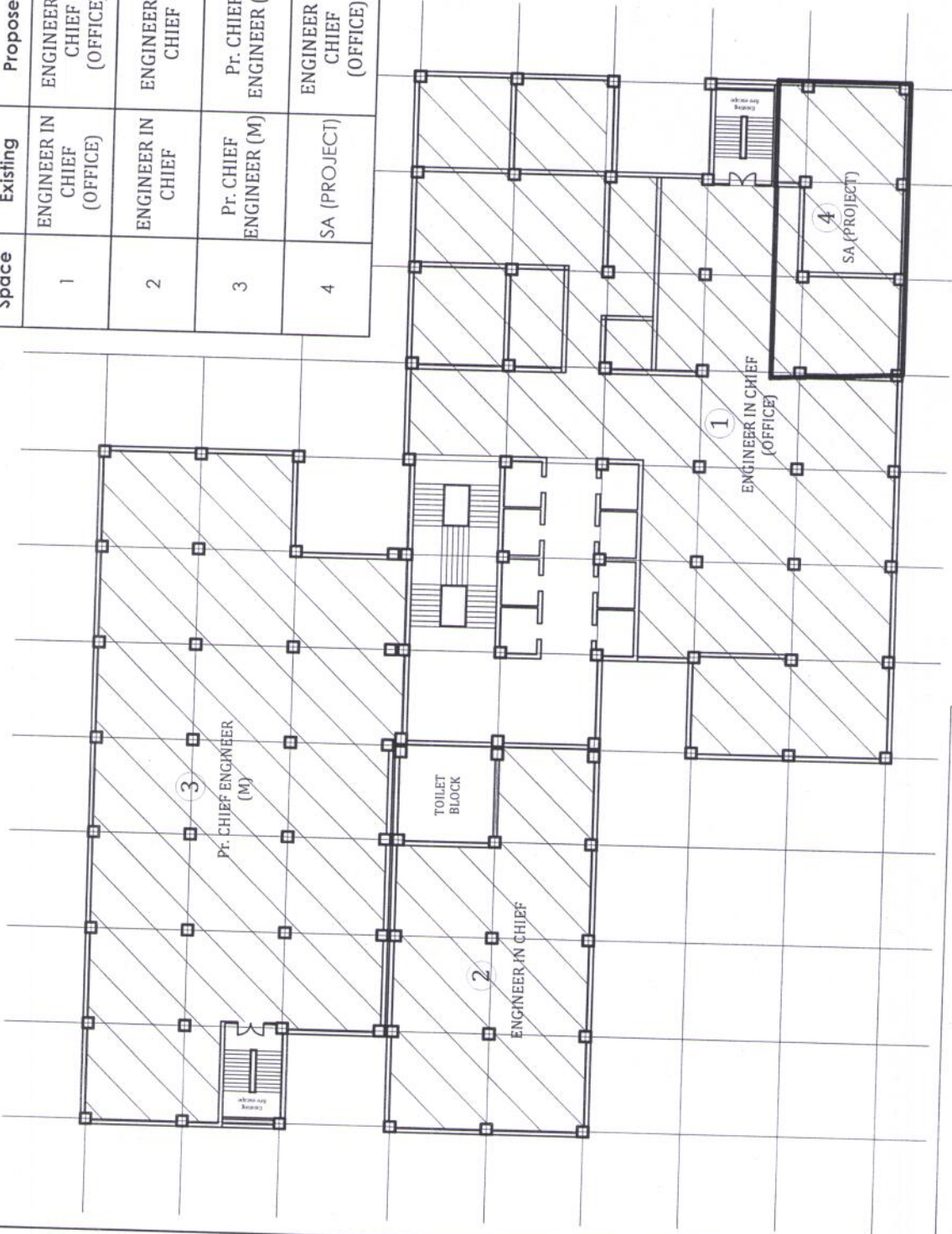
EE (CCTV)

CCTV (CPM & EE) & SE(QUA.)

ELEVENTH FLOOR PLAN

Handwritten signature

Floorwise relocation of offices			
Space	Existing	Proposed	Remarks
1	ENGINEER IN CHIEF (OFFICE)	ENGINEER IN CHIEF (OFFICE)	Remains unchanged.
2	ENGINEER IN CHIEF	ENGINEER IN CHIEF	Remains unchanged.
3	Pr. CHIEF ENGINEER (M)	Pr. CHIEF ENGINEER (M)	Remains unchanged.
4	SA (PROJECT)	ENGINEER IN CHIEF (OFFICE)	SA (Project) will shift on 8th Floor.

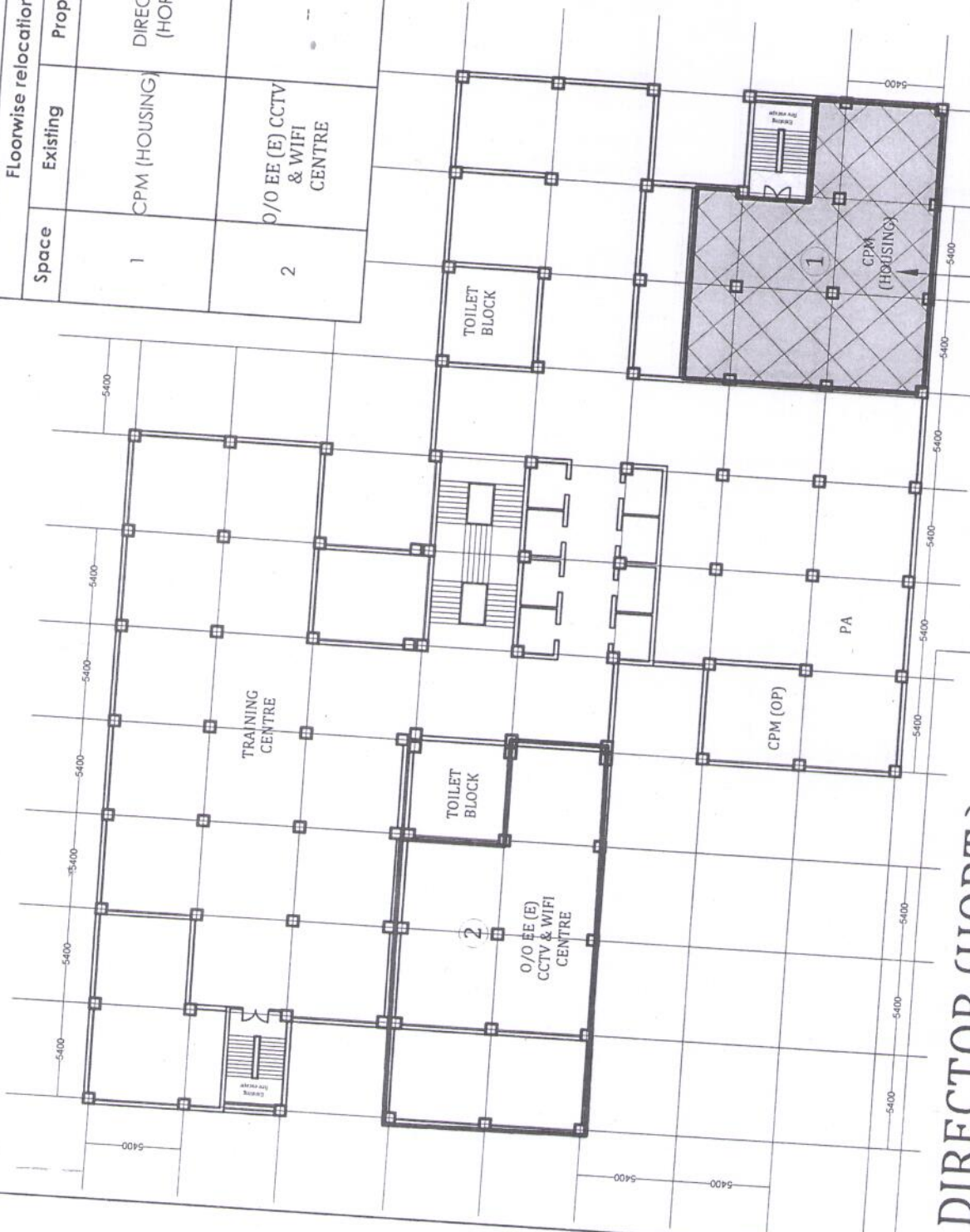


E-In-C & Pr. CHIEF ENG. (M)

TWELFTH FLOOR PLAN

2

Floorwise relocation of offices			
Space	Existing	Proposed	Remarks
1	CPM (HOUSING)	DIRECTOR (HORTI.)	CPM (HOUSING) will be shifted out & DIRECTOR HORTICULTURE will come from 11th floor.
2	O/O EE (E) CCTV & WIFI CENTRE	--	O/O EE (E) CCTV & WIFI CENTRE will move on 11th floor & vacate the space.



DIRECTOR
HORTICULTURE

DIRECTOR (HORT.)
THIRTEEN FLOOR PLAN